

# Playland at 43<sup>rd</sup> Sound Abatement Notice

---

Work on creating a sound abatement installation will be occurring on December 3<sup>rd</sup>, 4<sup>th</sup>, 10<sup>th</sup>, and 11<sup>th</sup>.

Corner ramp A- A panel wall will be built to capture the sound coming from this area. The inside of the ramp will be sprayed with insulating foam, and the plywood panel will be lined with acoustic panels on the side facing the skate area to redirect and absorb sound. This acoustic wall will be approximately 8 ft tall and will span the width of the corner ramp.

South ramps B & C - Plywood panels will cover the areas that are currently exposed. The inside of the ramp will be sprayed with insulating foam, and the plywood panel will be lined with acoustic panels on the side facing the skate area to redirect and absorb sound. This wall will be approximately 6 ft tall. The pipes that line the top of the ramps will be filled with insulation foam to absorb additional sound.

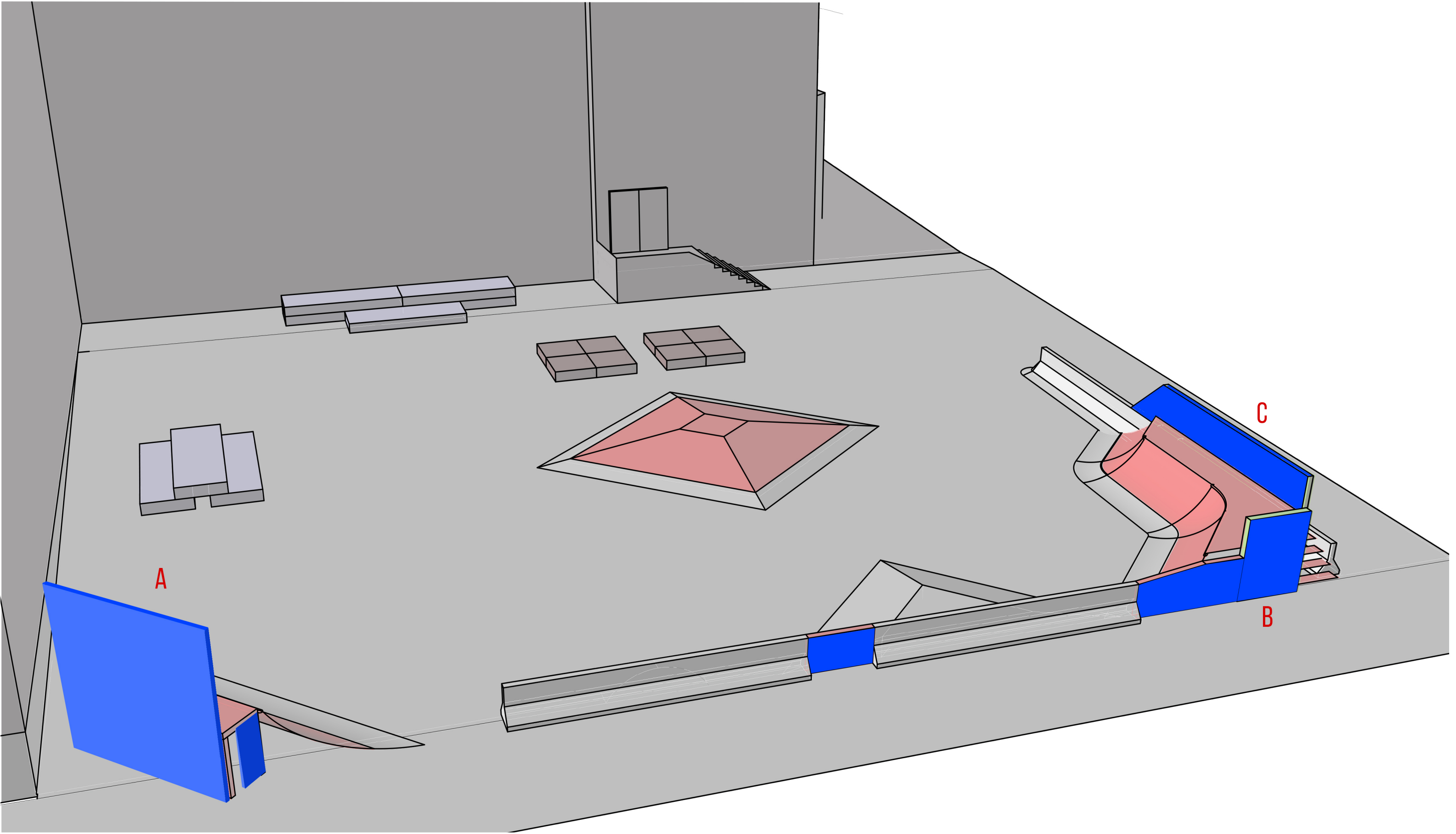
Staircase The staircase will be finalized with pressure-treated wood consistent with the rest of the structure.

Art Wall The structure built to abate the sound will also function as a programmable art wall, where local artists and youth can showcase their work as part of a rotating piece.

Pavement to Parks

---

Please email Maria De Alva at  
[maria.f.dealva@sfgov.org](mailto:maria.f.dealva@sfgov.org)



***Playland at 43rd Avenue - Skate Spot***  
RENDER - AERIAL VIEW WEST

SCALE: 1/16"=1'-0"  
DRAWN BY: JUSTIN MARKS  
DATE: APR-18-16

# Acoustic Panels and Insulating Foam for Sound Abatement Plan

Panels will vary depending on pricing and availability.



## SONEX® CLEAN ACOUSTIC SOUND BAFFLE

Categories: Acoustic Foam, Sonex® Acoustic Foams, Ceiling Treatments, Ceiling Sound Baffles, Acoustic Foam Sound Baffles

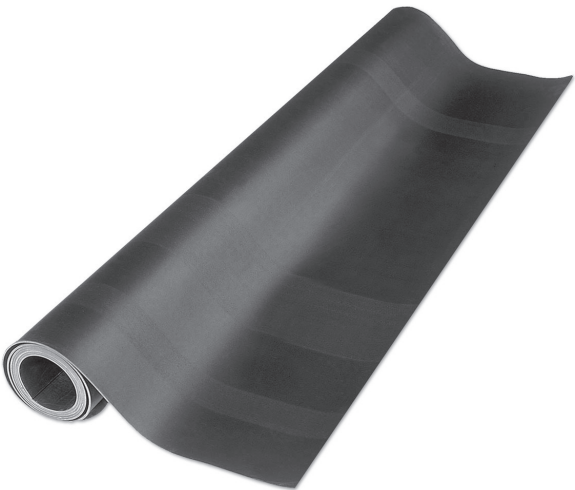


Item # 655330 Model # 346963  
**Dow FROTH-PAK 200 Sealant Foam Insulation Kit**

7 Ratings  
★★★★★  
4.5 Average

100%  
Recommend  
this product

Community Q  
& A  
21 Questions



2420 Grenoble Road  
Richmond, VA 23294  
Toll Free: 800-782-5742

Technical  
Data Sheet

### SONEX® Clean Baffles



#### TECHNICAL CHARACTERISTICS

**SIZE:** 24" x 48"  
**THICKNESS:** 2"  
**MATERIALS:** Melamine foam core, PVC

**FR Taffeta Vinyl:** 4.00 mil PVC Film  
Meets California fire marshal  
requirements section 13115 CA  
Health & Safety

**FIRE RESISTANCE:** Class 1 per ASTM E 84  
Meets UL 1715 (willtec natural)

**COLORS:** FR Taffeta Vinyl (See Chart)

**MOUNTING:** Hanging baffle is equipped with  
grommets, easily installed on ceiling-mounted cables or  
chains.(See installation guide)

- Washable, cleanable & durable
- Reduces reverberation & echo
- Class 1 fire rated core

**DESCRIPTION**  
SONEX® Clean sound baffles are designed for  
environments that require noise control with durable,  
washable and cleanable materials. Equipped with  
grommets for easy installation, these are ideal for use  
in a variety of applications, including bottling and food  
processing plants, clean rooms and food preparation  
areas. SONEX® Clean products meet USDA/FDA  
requirements.

The products are fully encapsulated in FR taffeta vinyl  
for efficient cleaning and long, durable life. They offer  
excellent sound absorption to reduce reverberation or  
echo.

The SONEX® Clean line is made from Willtec melamine  
foam core, which is ASTM E84 Class 1 fire-rated.  
Products are available in 17 standard colors.

These acoustic baffles are an excellent choice when  
washable, cleanable and durable sound absorption  
material is required to reduce reverberation or echo.



SOUND ABSORPTION (Sabins per Baffle per ASTM C423-07; Hanging Baffle)							
125 Hz	250 Hz	500 Hz	1000 Hz	2000 Hz	4000 Hz	Average	
1.88	5.23	10.33	11.84	5.33	2.99	8.20	