

March 2017

The Pavement to Parks program is pleased to announce that it has merged with Groundplay.

Groundplay now serves as the catalyst and communication hub for all temporary public-space projects in San Francisco that are citizen-powered and city-sanctioned.

Best practices found in this document are still applicable to Groundplay projects.

For more information, visit groundplaysf.org.



SAN FRANCISCO PLAZA MATERIALS CATALOG



VERSION
04.15.2016

BROUGHT TO
YOU BY:



CITY OF
SAN FRANCISCO

PAVEMENT TO PARKS PLAZA MATERIALS

CATALOG

Ground Surface Treatments	C.01
Traffic Control Devices	C.04
Softscape	C.07
Furnishings	C.11

The interdepartmental Pavement to Parks team has developed a pre-approved set of basic components for creating public spaces. These include ground surface treatments, planters, and furnishings which the City will provide once a Plaza Proposal is accepted by Pavement to Parks. This catalog will continue to expand in the future to include other elements and choices for temporary physical treatments in the Right-of-Way. Check the website regularly for new updates.

DEVELOPED BY:



Ilaria Salvadori

Robin Abad Ocubillo



Matt Lasky

Will Tabajonda



John Dennis

Martha Ketterer

Fionda Cundy

SPECIFICATIONS FOR

GROUND SURFACE TREATMENTS

PERIMETER STRIPING*

The perimeter of the pedestrianized area will be bounded by an 8" white stripe.

GROUND SURFACE COLOR*

Colored pavement inside the edgelines of the Pedestrian Plaza is not considered a traffic control device and therefore is covered under the CAMUTCD for Colored Pavement included in Section 3G.01: "Colored pavements consist of differently colored road paving materials, such as colored asphalt or concrete, or paint or other marking materials applied to the surface of a road or island to simulate a colored pavement."

The ground surface inside the edgelines of the Pedestrian Plaza will be treated with StreetBond 150 in Khakhi. StreetsBond is the identified manufacturer:

<http://www.quest-cp.com/streetbond150>

<http://www.quest-cp.com/color/sb-colorant-khaki>

* Per coordination with the specifications for Painted Safety Zones



GROUND SURFACE TREATMENTS

PERIMETER STRIPING

PERIMETER STRIPING
8" WHITE TAPE

Product



Color

White

Specifications

What: HotTape*Size:* 8" wide*Color:* White

Product Spec Sheet: http://www.ennisflint.com/getmedia/0acecb5d-86c6-46ec-8ad2-758c96a8d32e/Brochure_Preformed-Thermoplastic_HotTape?ext=.pdf

Vendor Contact Info

Ennis Flint

Ed Vodegel
916-205-7073
evodegel@ennisflint.com
www.ennisflint.com

Manufacturer Info

Ennis Flint

115 Todd Court
Thomasville, NC 27360
(469)-522-5863
www.ennisflint.com

Unit Price

Will be updated as available*



GROUND SURFACE TREATMENTS

GROUND SURFACE COLOR

STREETBOND® SB150
PAVEMENT COATING

Product



Color

Khaki (SRI=37)

Specifications

Developed for use over imprinted or flat asphalt, StreetBond® SB150 Pavement Coating bonds permanently to asphalt surfaces to provide both an enduring, aesthetic finish and a low-maintenance surface that helps protect and extend the life of the pavement.

Apply to crosswalks, parking lots, medians, traffic circles, pedestrian areas, driveways, streetscapes, and more!

Vendor Contact Info

Ennis Flint
Ed Vodegel
916-205-7073
evodegel@ennisflint.com
www.ennisflint.com

Manufacturer Info

Ennis Flint
115 Todd Court
Thomasville, NC 27360
(469)-522-5863
www.ennisflint.com

Unit Price

Will be updated as available*



SPECIFICATIONS FOR

TRAFFIC CONTROL DEVICES

SOFT – HIT POSTS / FLEXBILE BOLLARDS / FLEXIBLE DELINEATORS*

Section 6F.63 of the CAMUTCD provides standards for Channelizing Devices. Pedestrian Plazas in San Francisco are supported by the following: “Channelizing devices provide for smooth and gradual vehicular traffic flow from one lane to another, onto a bypass or detour, or into a narrower traveled way. They are also used to channelize vehicular traffic away from the work space, pavement drop-offs, pedestrian or shared-use paths, or opposing directions of vehicular traffic”

Soft Hit Posts should be arrayed along the perimeter of the Pedestrian Plaza on the same alignment (on top of) the 8” wide perimeter stripe. Spacing of Soft-Hit Posts should be no less than 5’ but no more than 8’.

OTHER TRAFFIC SIGNS*

Each site will be analyzed on a case-by-case basis to determine if additional CAMUTCD signage is required for motorists in the vicinity of the Pedestrian Plaza. These could include Yield (R1-2), No Turn (R3-1, R3-2), Turn Only (R3-5), Must Turn (R3-8), Do Not Enter (R3-27 and R5-1), No Motor Vehicles (R5-3), etc.

* Per coordination with the SFMTA specifications for Painted Safety Zones



Image by Barry Ragin

TRAFFIC CONTROL DEVICES

SOFT-HIT POSTS

SOFT-HIT POSTS
FLEXIBLE DELINEATORS

Product



Color

White

Specifications

What: Safe-Hit Type 2 Surface Mount Delineator*Size:* 36" tall*Color:* White with reflector*Product Spec Sheet:* <http://www.safehitlx.com/html/safehit/pdf/1248A00SHPI.pdf>

Vendor Contact Info

Interstate Traffic Control

Mark Dellamonica
 1700 Industrial Road
 San Carlos, CA 94070
 (650)-591-2300
mmdellamonica@aol.com

Manufacturer Info

Safe-Hit

1279 Emerald Sea Way
 San Marcos, CA 92078
 760-518-9929
dan.mccarthy@trin.net
dmccarthy@quixtrans.com
<http://www.safehitlx.com/>

Unit Price

\$22.75 ea post + base
 \$4.25 adhesive pad



Image by Flickr user Frank Chan



Image by Flickr user therogers



TRAFFIC CONTROL DEVICES

OTHER TRAFFIC SIGNS

OTHER TRAFFIC SIGNS

California MUTCD 2014 (Including Revision 1) Sign Charts

Sheet 1 of 14 - Regulatory Signs

This chart contains commonly used signs in California, and is not meant to be used as a comprehensive sign chart or a stand-alone sign design tool.

California signs are designated with a (CA) suffix. Otherwise, federal 2009 MUTCD sign designations are shown (formerly known as sign codes).

For sign specification details, visit www.dot.ca.gov/hq/trafficopsengineering/control-devices/signs.htm.

California Department of Transportation
Division of Traffic Operations, Office of Traffic Engineering
Effective November 7, 2014



Specifications

Each site will be analyzed on a case-by-case basis to determine if additional CAMUTCD signage is required for motorists in the vicinity of the Pedestrian Plaza. These could include Yield (R1-2), No Turn (R3-1, R3-2), Turn Only (R3-5), Must Turn (R3-8), Do Not Enter (R3-27 and R5-1), No Motor Vehicles (R5-3), etc.

Vendor Contact Info

Provided by the City

Unit Price

Varies per sign.

SPECIFICATIONS FOR

SOFTSCAPE

UPCYCLED GRANITE BLOCKS AND CURBS

PLANT CONTAINERS*

Planters may either be square, rectangular, or cone shaped; per project design. The planters may vary in height and width per project design. Old Town Fiberglass is the identified manufacturer: <http://www.oldtownfiberglass.com/products/standard-planters/>

All planters should be Light Gray #16 in the anti-graffiti finishes: Gloss or Matte.

PLANT PALETTE

The San Francisco Plant Finder is a resource for gardeners, designers, ecologists and anyone who is interested in greening neighborhoods, enhancing our urban ecology and surviving the drought. The Plant Finder recommends appropriate habitat-building plants for sidewalks, backyards and roofs that are adapted to San Francisco's unique environment and climate.

<http://sfplantfinder.org/>

* Per coordination with the SFMTA specifications for Painted Safety Zones.



Images by Old Town Fiberglass

LANDSCAPING

PLANT CONTAINERS

CARDIFF SQUARE
CARDIFF RECTANGLE

Product (Cardiff Square)

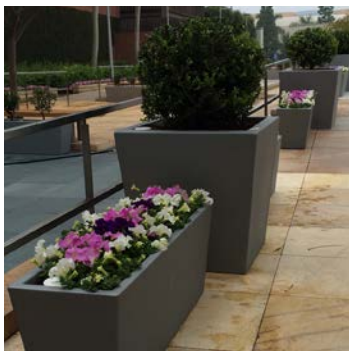


Product (Cardiff Rectangle)



Color

Light Gray #16



Images by Old Town Fiberglass

Specifications

What: Old Town Fiberglass Cardiff Tapered Square and Rectangle Planters

Size:**Cardiff Square**

Min 16" L x 16" W x 32" H

Max 72" L x 72" W x 36" H

Cardiff Rectangle

Min. 36" L x 18" W x 18" H

Max. 96" L x 15" W x 12" H

Color: Light Gray #16, gloss finish

Product Spec Sheet: http://www.oldtownfiberglass.com/wp-content/uploads/2012/05/Old-Town-Fiberglass_Specifications.pdf

Vendor Contact/Manufacturer Info

Old Town Fiberglass

Bob Fitzpatrick

767 N. Hariton Street

Orange, CA 92868

1-714-633-3732

info@oldtownfiberglass.com<http://www.oldtownfiberglass.com/>

City & County of San Francisco Approved Vendor
#98188

Unit Price

\$188+ / Unit (Cardiff Square)**\$271+ / Unit (Cardiff Rectangle)**

Contact vendor to confirm pricing.

LANDSCAPING

PLANT CONTAINERS

PONTO

Product



Color

Light Gray #16

Specifications

What: Old Town Fiberglass Ponto Tapered Cylinder Planter

Size:

Min 9" DIA (outer) x 6.5" DIA (inner) x 11" H
 Max 96" DIA (outer) 84" DIA (inner) x x 39" H

Color: Light Gray #16, gloss finish

Product Spec Sheet: http://www.oldtownfiberglass.com/wp-content/uploads/2012/05/Old-Town-Fiberglass_Specifications.pdf

Vendor Contact/Manufacturer Info

Old Town Fiberglass

Bob Fitzpatrick
 767 N. Hariton Street
 Orange, CA 92868
 1-714-633-3732
info@oldtownfiberglass.com
<http://www.oldtownfiberglass.com/>

City & County of San Francisco Approved Vendor
 #98188

Unit Price

\$63+ / Unit

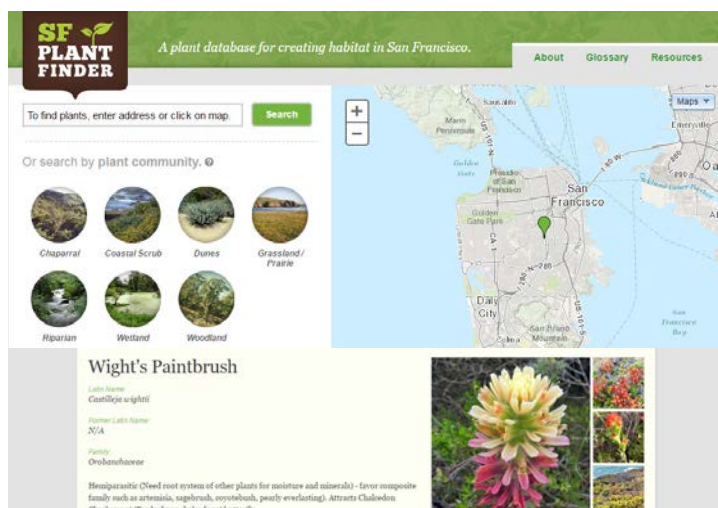
Contact vendor to confirm pricing.



LANDSCAPING

PLANT PALETTE

SF PLANT FINDER WEB SITE:
SFPLANTFINDER.ORG



About the SF Plant Finder

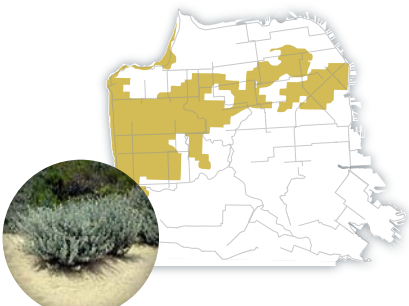
The Plant Finder recommends appropriate habitat-building plants for sidewalks, backyards and roofs that are adapted to San Francisco's unique environment and climate.

This tool was developed as part of the Green Connections project and provides a centralized location to learn about plants and trees recommended by City agencies and local ecology experts. The tool includes links to the Green Connections Ecology Guides – route-specific recommendations to support target species and habitat along the 24 Green Connection routes.

Coastal Scrub



Dunes



Grassland / Prairie



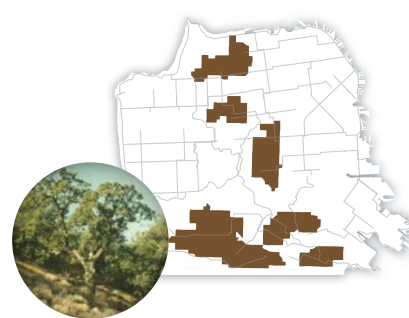
Riparian



Wetland



Woodland



To use SF Plant Finder,
 visit the web site:

www.sfplantfinder.org

A plant database for creating habitat in San Francisco.

SPECIFICATIONS FOR

FURNISHINGS

MOVABLE FURNISHINGS

Finish color for movable furnishings may vary per site or per project sponsor. The City may wish to specify a limited range of colors, or even a single color, to convey a consistent image of Pedestrian Plazas throughout the City.

All furnishings are collapsible to facilitate convenient deployment and off-time storage. EMU America is the identified manufacturer: <http://emuamericas.com/>

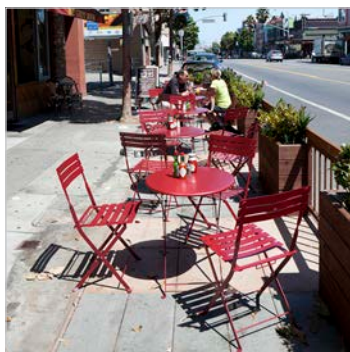


FURNITURE

CHAIRS

ARC EN CIEL #314

Product



The Crepe House Parklet / Image by Wendy Chen

Specifications

What: Emu Americas Arc en Ciel #314 Folding Chair

Size: 17" W x 17" D x 32" H

Weight: 10.5 lb

Color: Select one color per project. Some colors may take longer to ship.

Product Spec Sheet: http://emuamericas.com/specs/arc_en_ciel_314

Vendor Contact Info

The Brixey Corp.

Jacques Palmieri
30414 Ganado Drive Suite A
Rancho Palos Verdes, CA 90275
1-310-544-6098
sales@brixey.com
<http://www.brixey.com>

City & County of San Francisco Approved Vendor
#98168

Manufacturer Info

Emu Americas, LLC

1799 Pennsylvania St, 4th Floor
Denver, CO 80203
1-303-733-3385
<http://emuamericas.com/>

Unit Price

\$60 / set of 12 chairs

Contact vendor to confirm pricing.

FURNITURE

TABLES

ARC EN CIEL #334

ARC EN CIEL #346

Product (Arc en Ciel #334)



Product (Arc en Ciel #346)



Specifications

What: Emu Americas Arc en Ciel #334 and #346 Folding Tables

Size:

Rectangular (#334): 28" L x 20" W x 29.5" H

Round (#346): 32" DIA x 29.5" H

Weight: Rectangular: 18 lb / Round: 22 lb

Color: Select one color per project. Some colors may take longer to ship.

Product Spec Sheet: Rectangular: http://emuamericas.com/specs/arc_en_ciel_346/
Round: http://emuamericas.com/specs/arc_en_ciel_334

Vendor Contact Info

The Brixey Corp.

Jacques Palmieri
30414 Ganado Drive Suite A
Rancho Palos Verdes, CA 90275
1-310-544-6098
sales@brixey.com
<http://www.brixey.com>

City & County of San Francisco Approved Vendor
#98168

Manufacturer Info

Emu Americas, LLC

1799 Pennsylvania St, 4th Floor
Denver, CO 80203
1-303-733-3385
<http://emuamericas.com/>

Unit Price

\$130 / unit (#334)

\$140 / unit (#346)

Contact vendor to confirm pricing.



www.pavementtoparks.org